

walhúb

WALLCOVERING SPECIALIST

Strato.®

INTERIOR TEXTURE PAINT COLLECTION



EDITION
06





Features

Crack Resistant



Low VOC & Odor



Formaldehyde & Lead Free



Green Choice, Water Based & Eco-friendly



Easy Application & DIY Friendly



Anti-chalking & Efflorescence



Applicable on Ceiling



Easy Maintenance



Easy to Touch Up



Matte Finishing



Strato[®] CEMENT TEXTURE

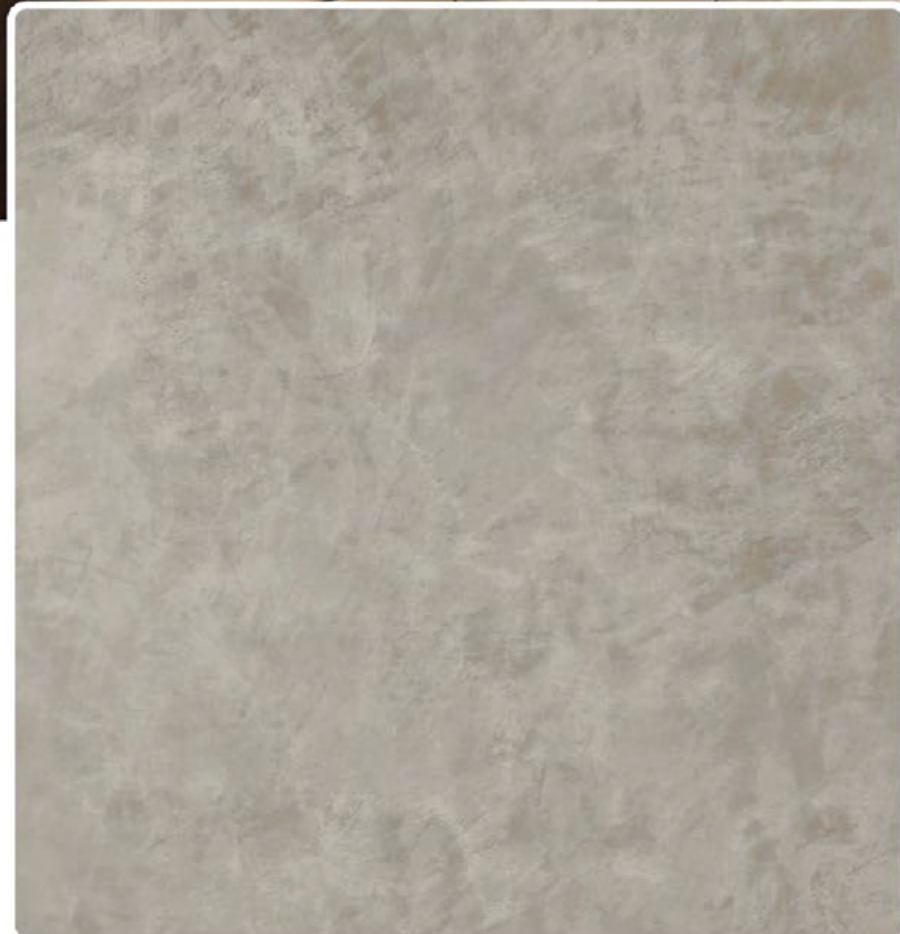
Create everlasting look with Strato[®] Cement Texture. Whether you are going for the industrial, scandinavian, contemporary or minimalistic style, the backdrop of the cement texture can complete the look.



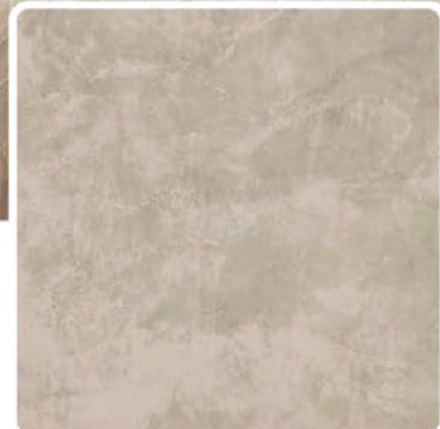
• **INTERIOR USE ONLY**
For exterior options, please see **MONOKRETE**.

SCT-301

SILVER
GREY



Silver Grey | **SCT-301**



Natural Grey | **SCT-302**



Shark Grey | **SCT-303**



SCT-304

GRANITE
GREY



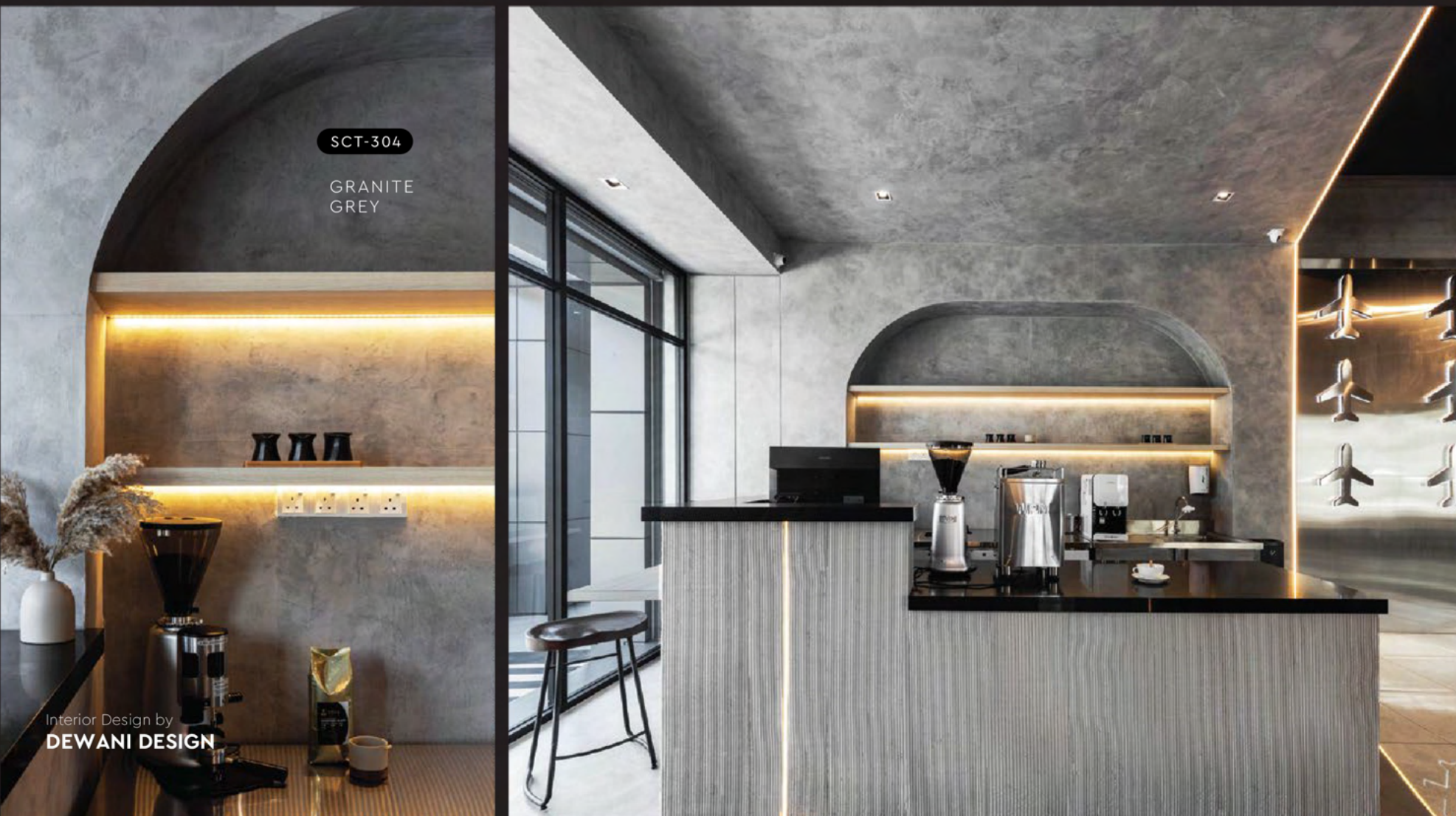
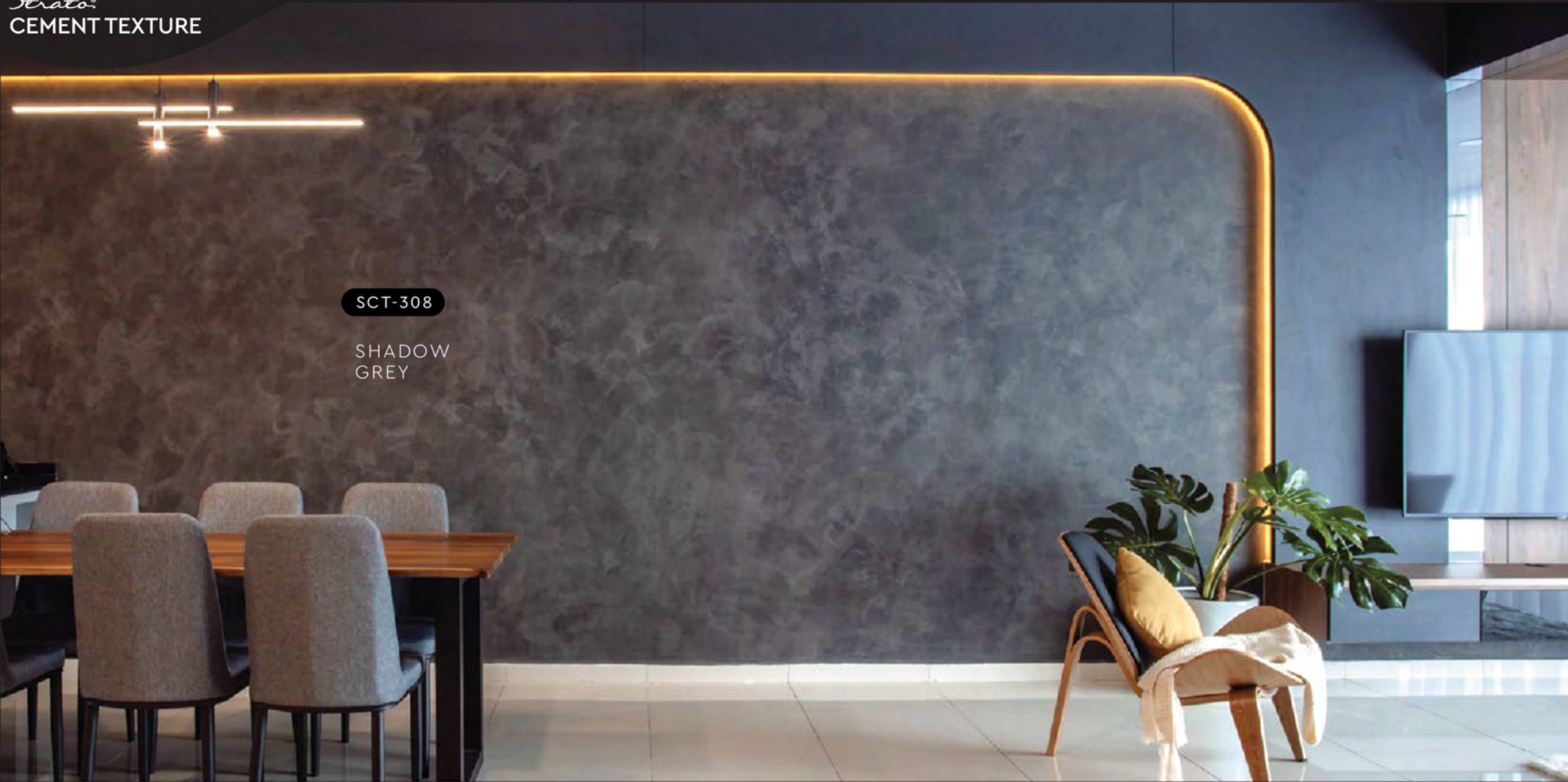
SCT-304

GRANITE
GREY

SCT-306

CHARCOAL
GREY

Interior Design by
GROUND UP



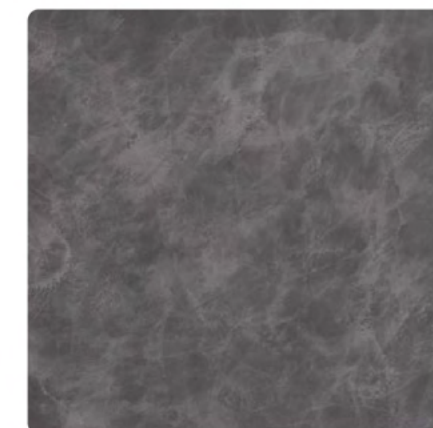
Granite Grey | **SCT-304**



Iron Grey | **SCT-305**



Charcoal Grey | **SCT-306**



Metal Grey | **SCT-307**

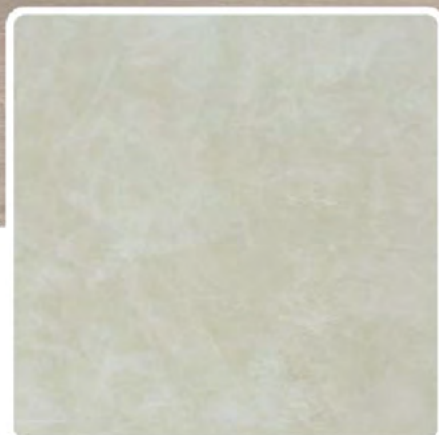


Shadow Grey | **SCT-308**

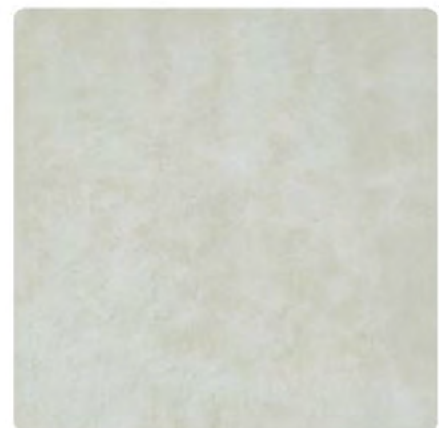


SCT-309

ASHES
GREY



Ashes Grey | SCT-309



Misty Grey | SCT-310



SCT-309

ASHES
GREY

APPLICATION TECHNIQUE



APPLICATION VIDEO

Preparation: - Cover the edges of surface that won't be painted by masking it with tape, paper or plastic.
- Clean up the wall surface to ensure it is free from dirt and dust.



1 PRIMER

Roll 2 layers of primer on the entire surface.
Allow 30 minutes to dry between the layers.
(The primer can be diluted with maximum 5% of clean water)

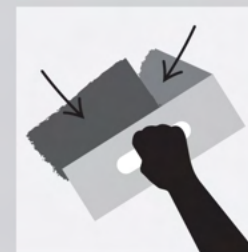
Tool: Roller



2 SANDING

Sand the entire surface in circular motion to ensure the surface is smooth.

Tool: 600 Grit Sand Paper



3 TEXTURE COAT

Scrape texture coat randomly to create pattern. Ensure the whole surface area is covered. Then apply second layer.

Tool: Stainless Steel Trowel

(use a larger trowel for a larger pattern, a smaller trowel for smaller pattern)



4 SANDING (OPTIONAL)

Sand the entire surface in circular motion to enhance the pattern.

Tool: 600 Grit Sand Paper



5 TOPCOAT

Apply SR-Top 1 on entire surface using a dry sponge in circular motions.

IMPORTANT: Use a clean and dry sponge or cleaning cloth to wipe the excess topcoat before it dries to avoid the sponge marks.

Tool: Sponge / Cleaning Cloth

IMPORTANT: Color may vary on application technique & amount of material used.

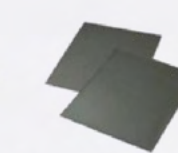
Tools:



Roller



Trowel / Scraper



Sand Paper (600 Grit)



Sponge / Cleaning Cloth

PACKING DATA

1 L	Primer
1 L	Texture Coat
0.5 L	Topcoat (SR-Top 1)

Coverage (per set)

WALL	6 - 7 sqm
CEILING	5 - 6 sqm



Strato® VELOURS

Rich velvety layers of color to enhance the interior space.
Each color brings out a different mood & ambience,
find a color that matches your personality.



Features

Crack Resistant



Low VOC & Odor



Formaldehyde & Lead Free



Green Choice, Water Based & Eco-friendly



Easy Application & DIY Friendly



Anti-chalking & Efflorescence



Applicable on Ceiling



Easy Maintenance



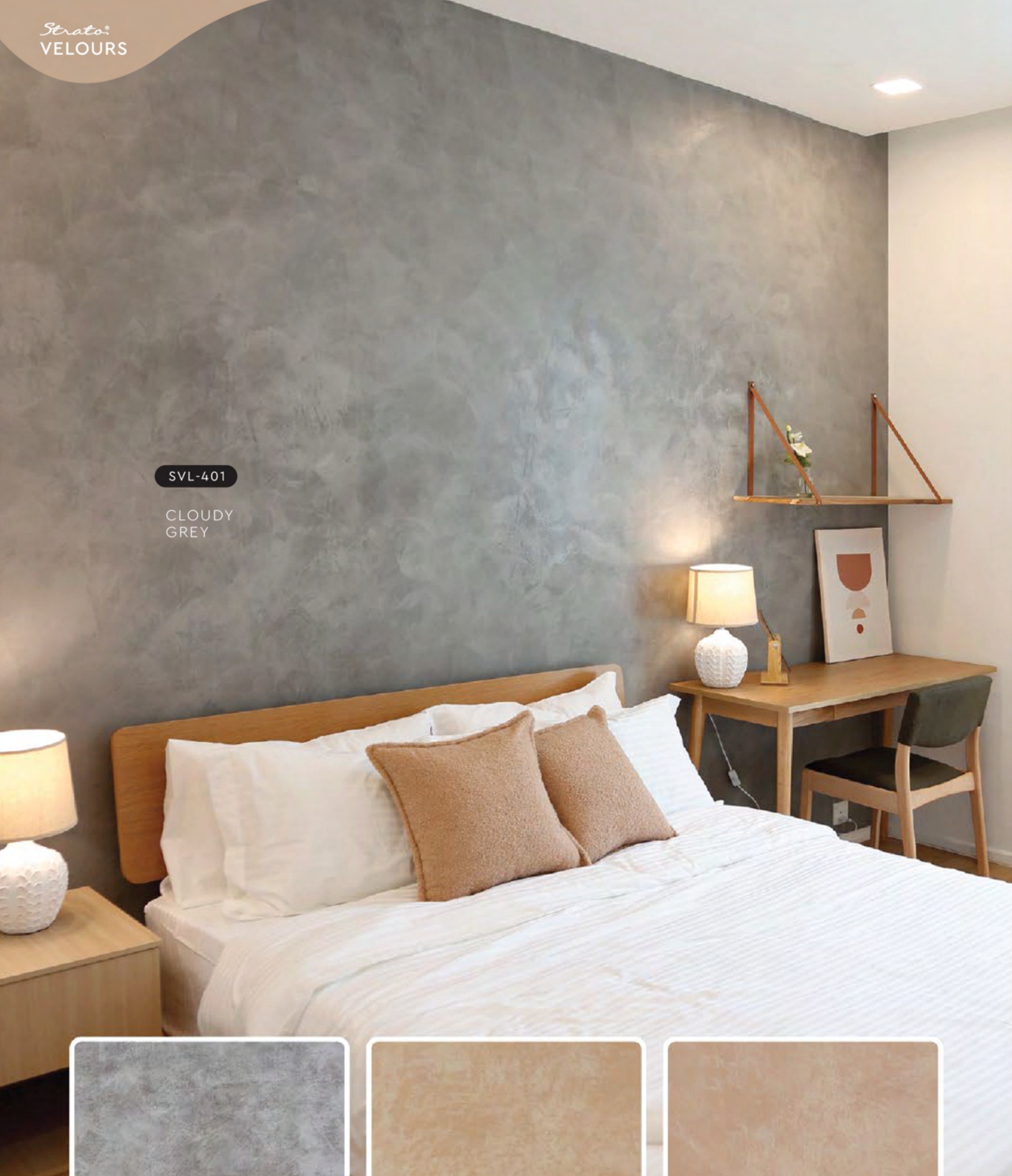
Easy to Touch Up



Matte Finishing

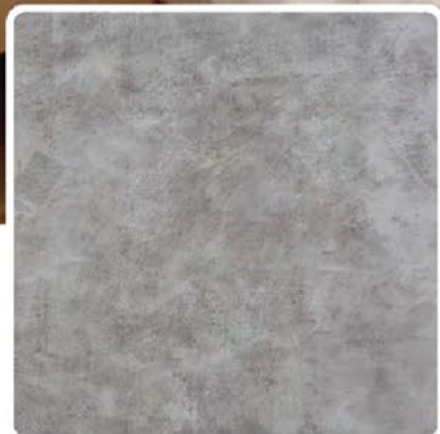


• **INTERIOR USE ONLY**
For exterior options, please see **MONOKRETE**.

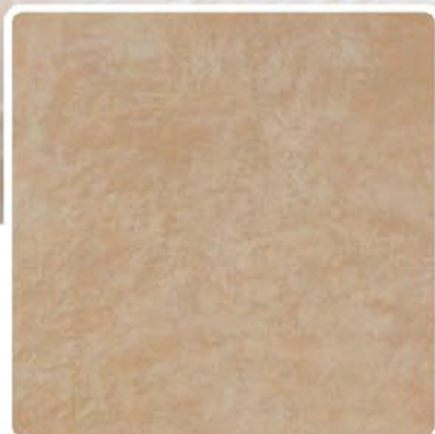


SVL-401

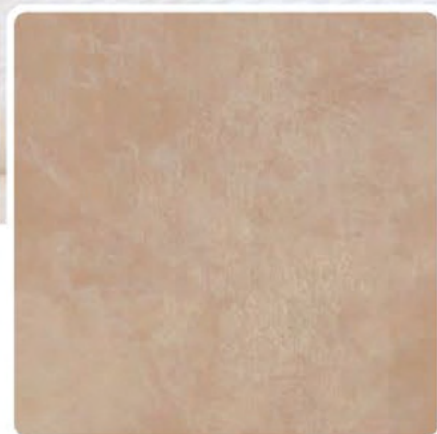
CLOUDY
GREY



Cloudy Grey | **SVL-401**



Mushroom Beige | **SVL-402**

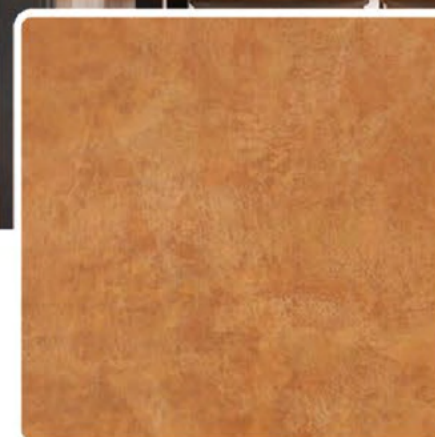


Hazel Wood | **SVL-403**

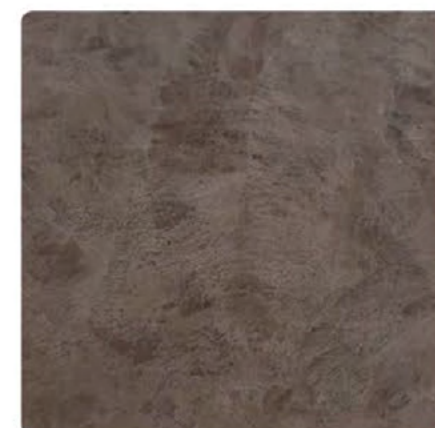


SVL-404

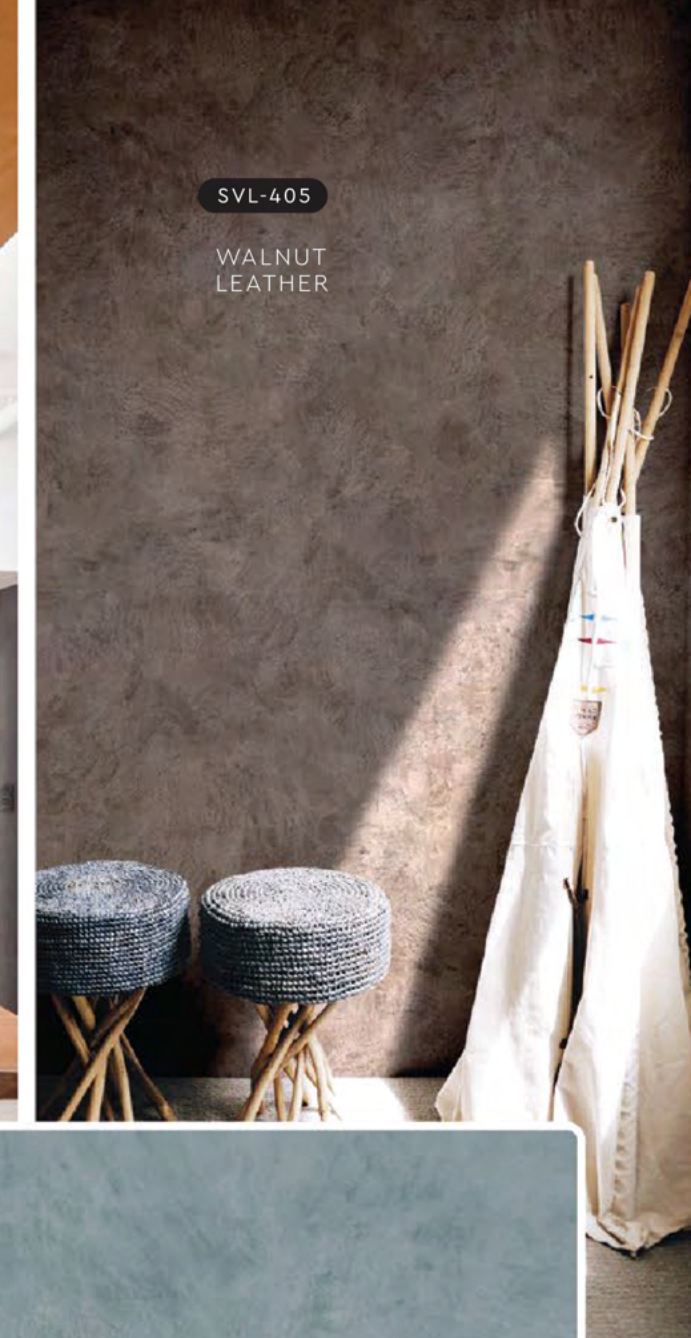
SUMMER
SAHARA



Summer Sahara | **SVL-404**

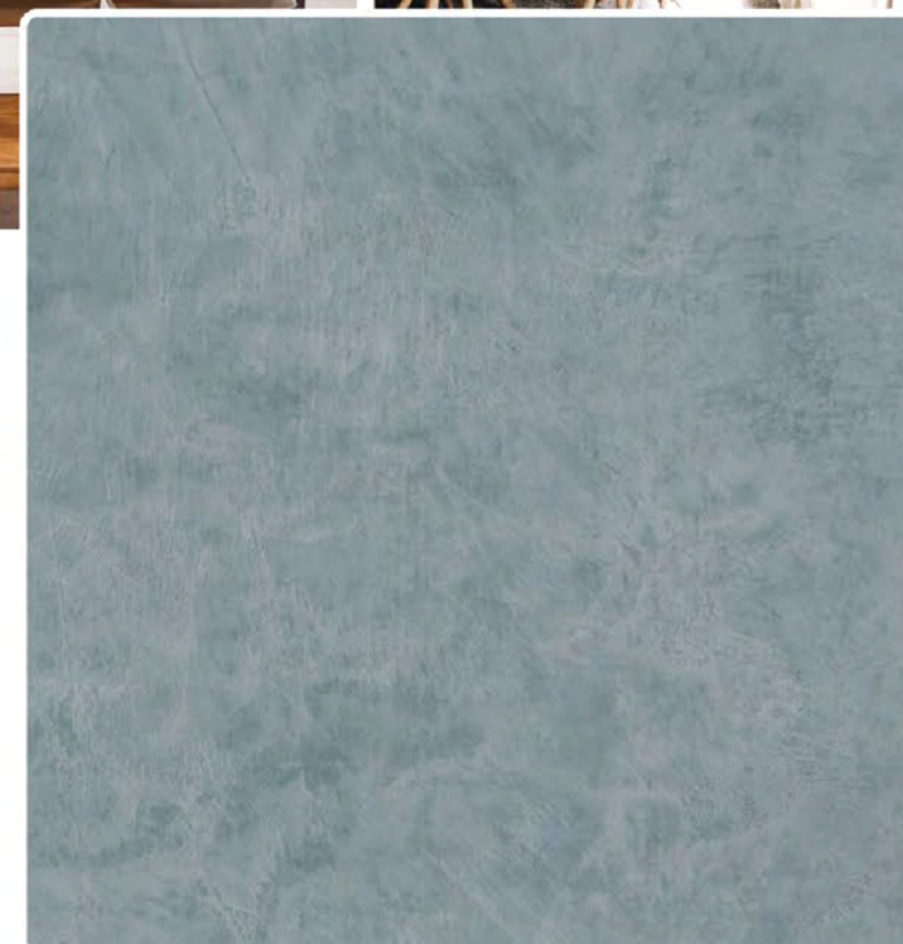


Walnut Leather | **SVL-405**



SVL-405

WALNUT
LEATHER



Brocade Blue | **SVL-406**



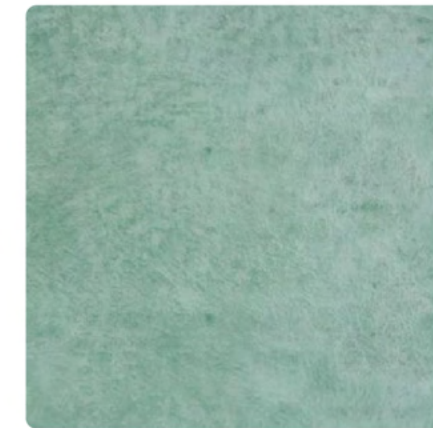
SVL-408

ROYAL
DENIM



SVL-414

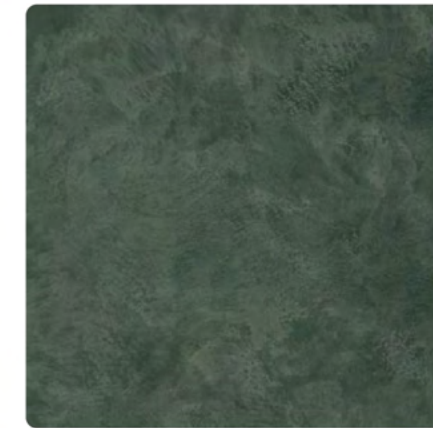
HERBAL
GARDEN



Frosted Mint | **SVL-411**



Vivid Emerald | **SVL-412**



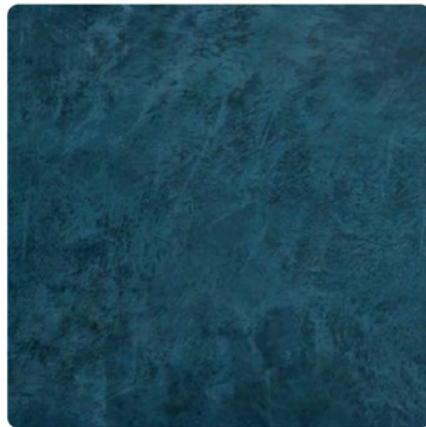
Hunter Green | **SVL-413**



Herbal Garden | **SVL-414**



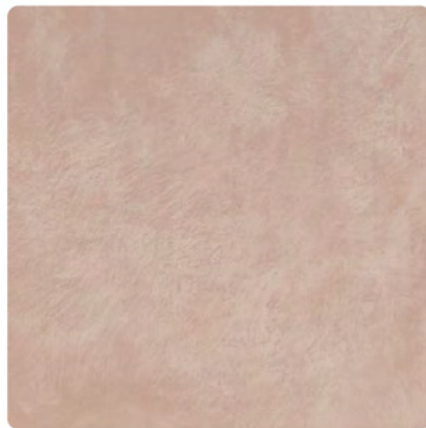
Deep Marine | **SVL-407**



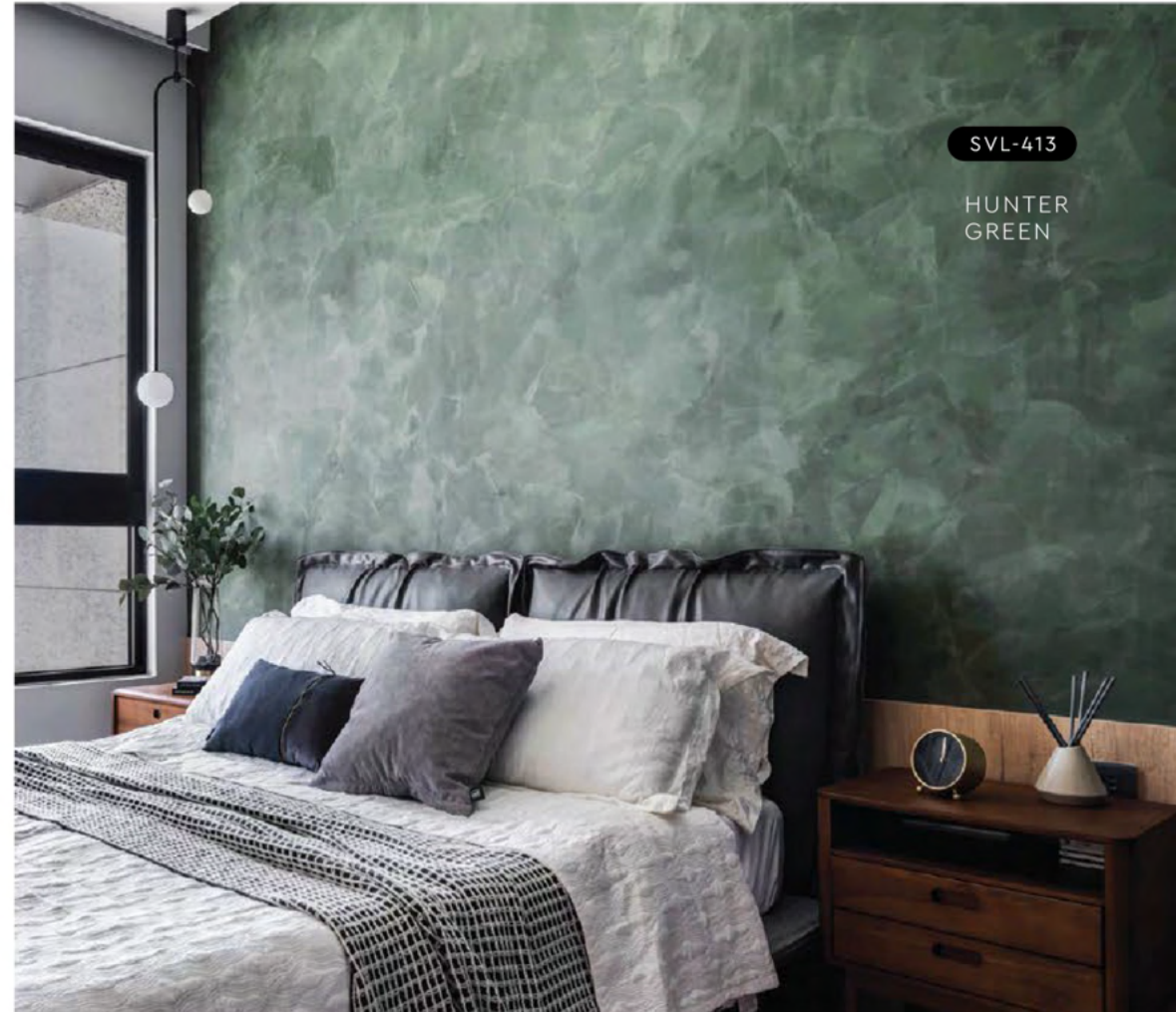
Royal Denim | **SVL-408**



Violet Memory | **SVL-409**

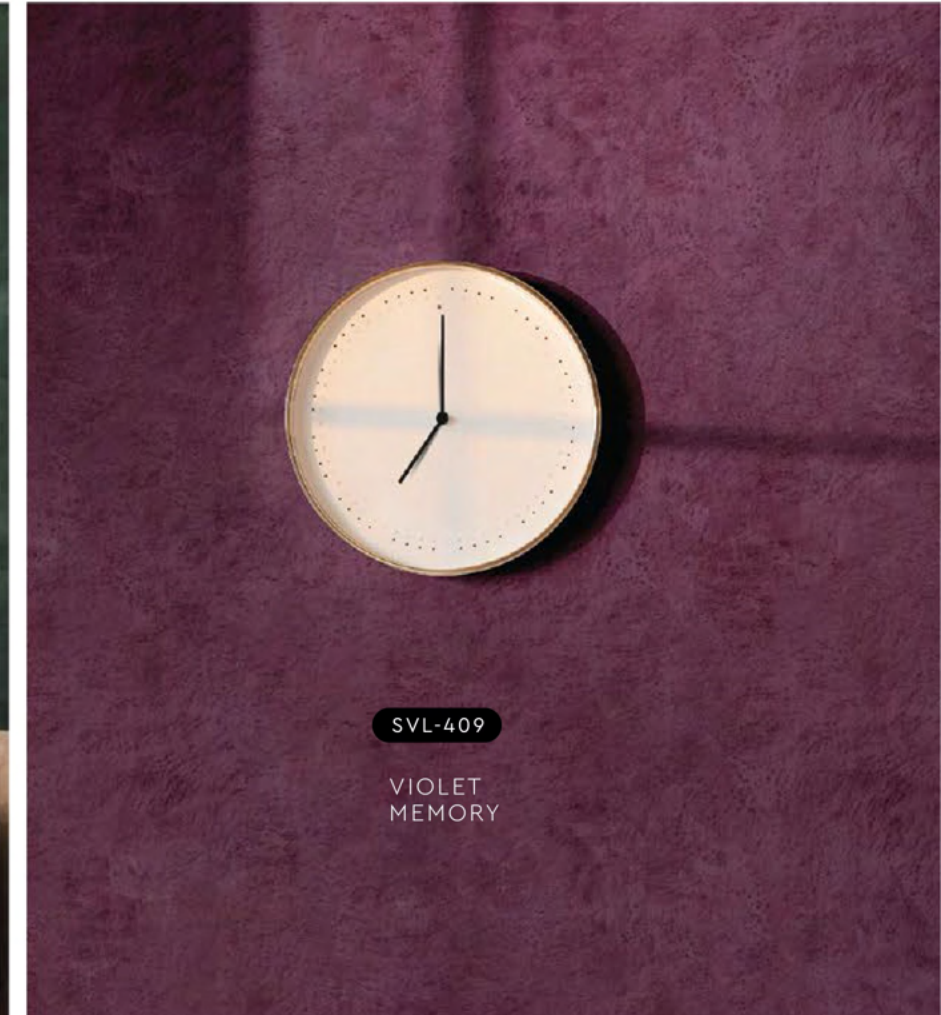


Rosy Mauve | **SVL-410**



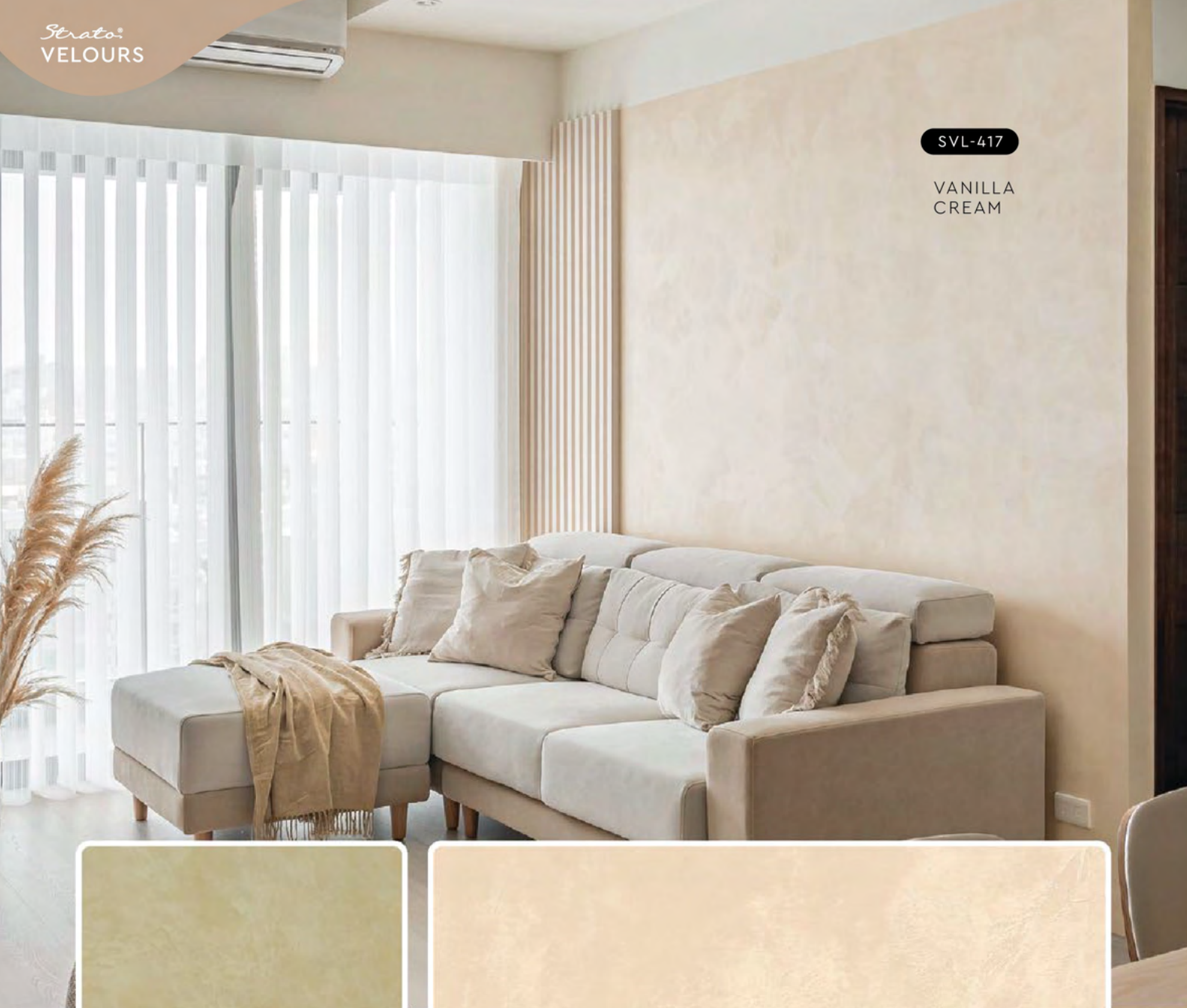
SVL-413

HUNTER
GREEN



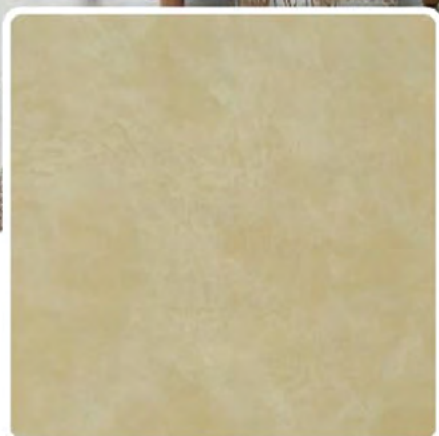
SVL-409

VIOLET
MEMORY

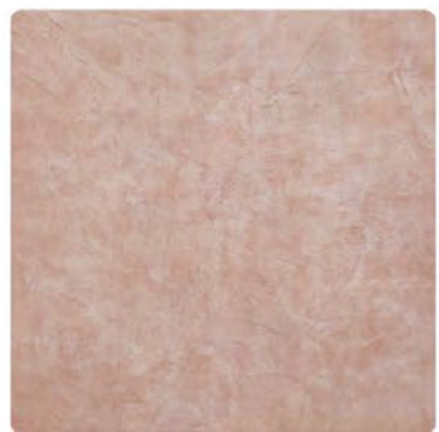


SVL-417

VANILLA
CREAM



Lime Mist | SVL-415



Flamingo Blush | SVL-416



Vanilla Cream | SVL-417

APPLICATION TECHNIQUE



APPLICATION VIDEO

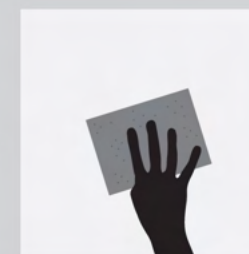
Preparation: - Cover the edges of surface that won't be painted by masking it with tape, paper or plastic.
- Clean up the wall surface to ensure it is free from dirt and dust.



1 PRIMER

Roll 2 layers of primer on the entire surface. Allow 30 minutes to dry between the layers. (The primer can be diluted with maximum 5% of clean water)

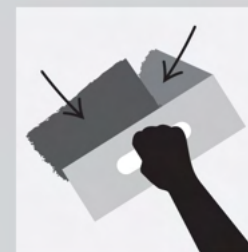
Tool: Roller



2 SANDING

Sand the entire surface in circular motion to ensure the surface is smooth.

Tool: 600 Grit Sand Paper



3 TEXTURE COAT

Scrape texture coat randomly to create pattern. Ensure the whole surface area is covered. Then apply second layer.

Tool: Stainless Steel Trowel

(use a larger trowel for a larger pattern, a smaller trowel for smaller pattern)



4 SANDING (OPTIONAL)

Sand the entire surface in circular motion to enhance the pattern.

Tool: 600 Grit Sand Paper



5 TOPCOAT

Apply SR-Top 1 on entire surface using a dry sponge in circular motions.

IMPORTANT: Use a clean and dry sponge or cleaning cloth to wipe the excess topcoat before it dries to avoid the sponge marks.

Tool: Sponge / Cleaning Cloth

IMPORTANT: Color may vary on application technique & amount of material used.

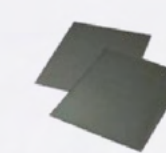
Tools:



Roller



Trowel / Scraper



Sand Paper (600 Grit)



Sponge / Cleaning Cloth

PACKING DATA

1 L	Primer
1 L	Texture Coat
0.5 L	Topcoat (SR-Top 1)

Coverage (per set)

WALL	6 - 7 sqm
CEILING	5 - 6 sqm



Strato® cashmere

Strato® Cashmere embodies the pinnacle of elegance in textured coating. Achieved through smooth layering and delicate craftsmanship, the finished product gives a refined and royal appearance with a lingering hint of sophistication.

• INTERIOR USE ONLY

Features

Low VOC & Odor



Formaldehyde & Lead Free



Green Choice, Water Based & Eco-friendly



Easy, Quick Application & DIY Friendly



Easy Maintenance





SCH-003

SILVER
SLATE



SCH-016

STARDUST
SILVER

Interior Design by
METRICS® DESIGN



SCH-008

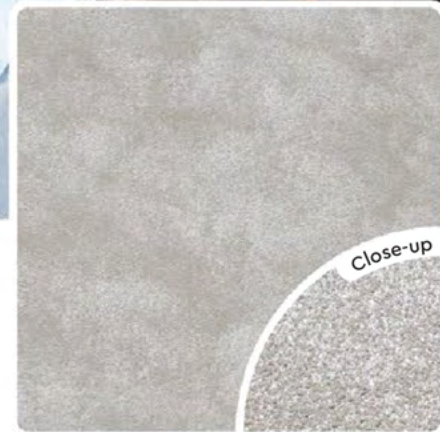
EGGSHELL
BEIGE



Pearl White | **SCH-001**



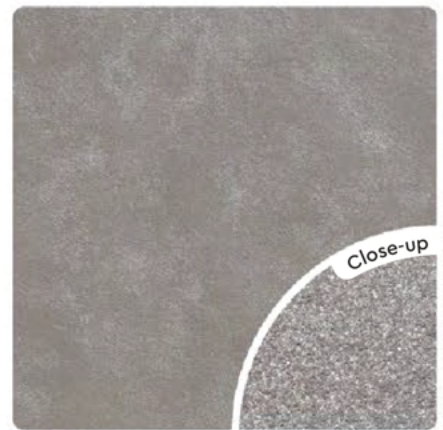
Silver Mist | **SCH-002**



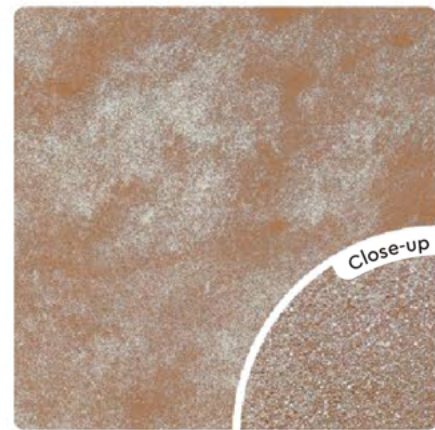
Silver Slate | **SCH-003**



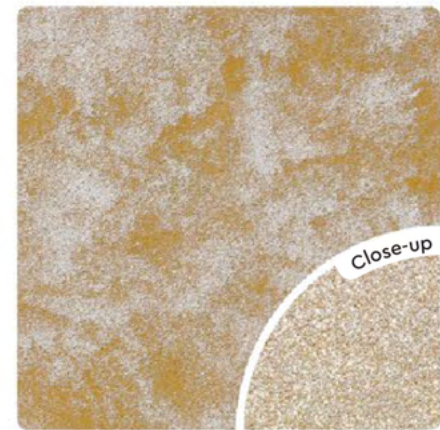
Autumn Beige | **SCH-007**



Platinum Metal | **SCH-004**



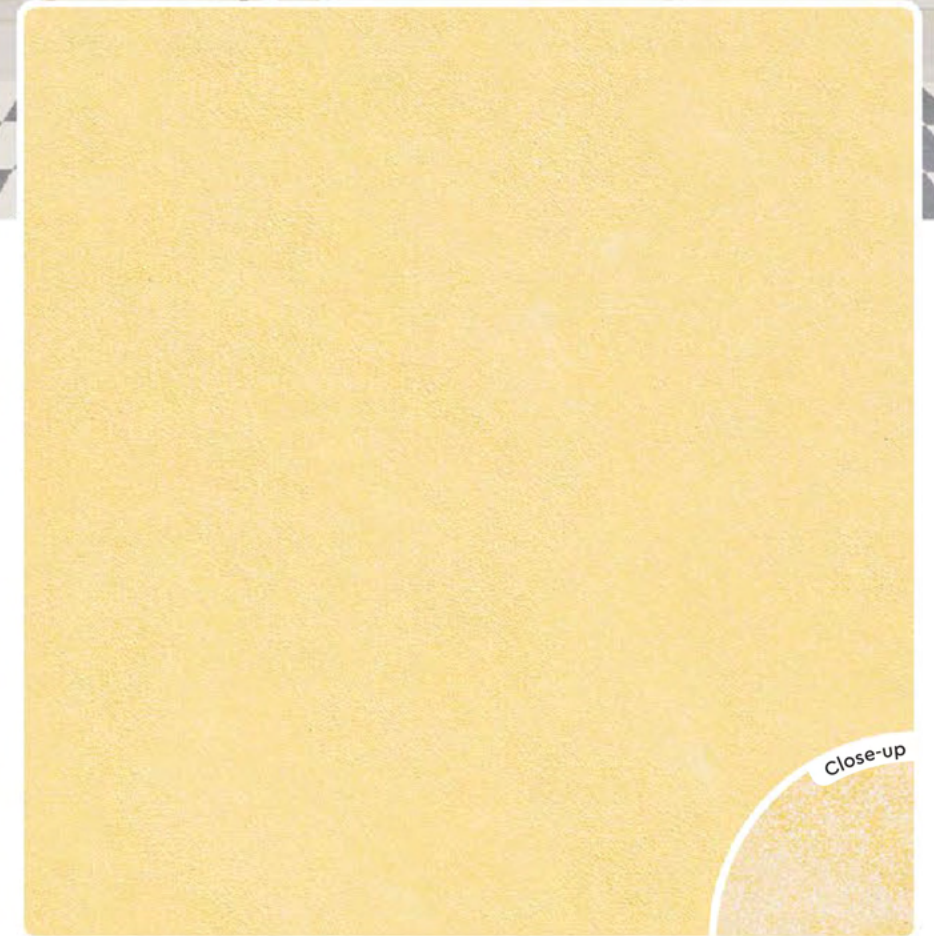
Bronze Age | **SCH-005**



Sand Castle Beige | **SCH-006**



Eggshell Beige | **SCH-008**



Desert Gold | **SCH-009**

SCH-015

POWDER
BLUE



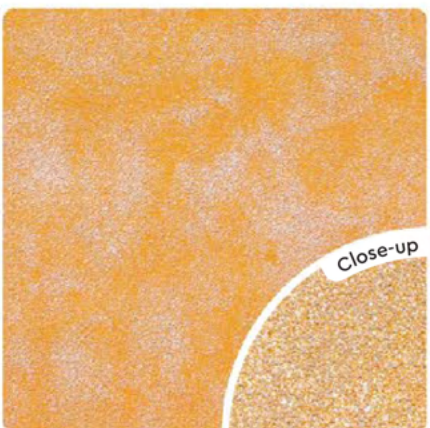
Baby Doll Pink | SCH-013



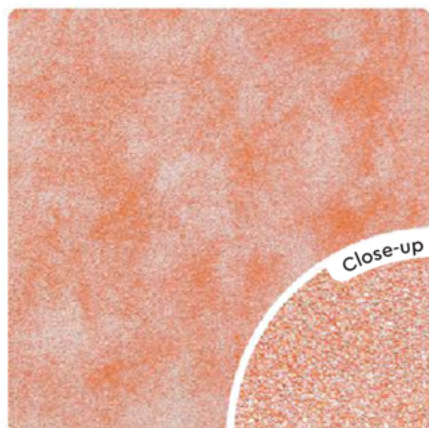
Coral Blush | SCH-014



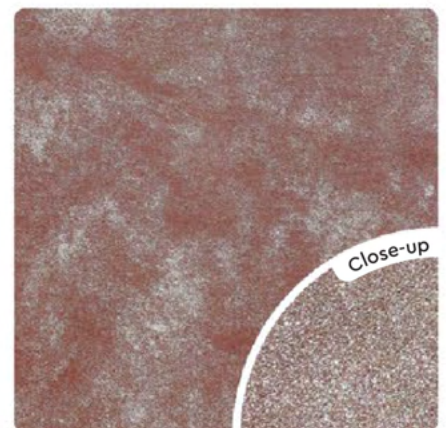
Powder Blue | SCH-015



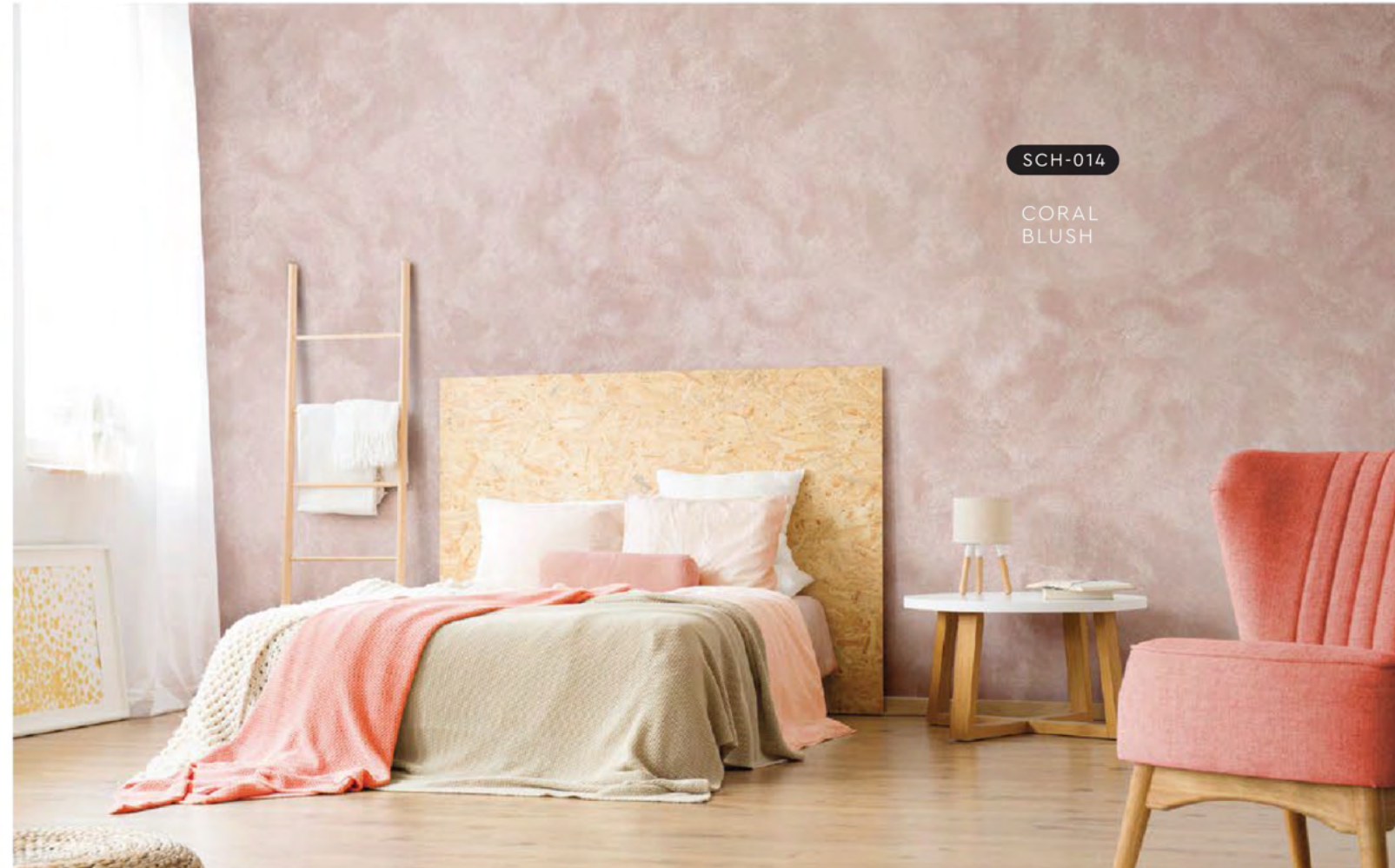
Honey Yellow | SCH-010



Peach Blossom | SCH-011



Plum Sunset | SCH-012

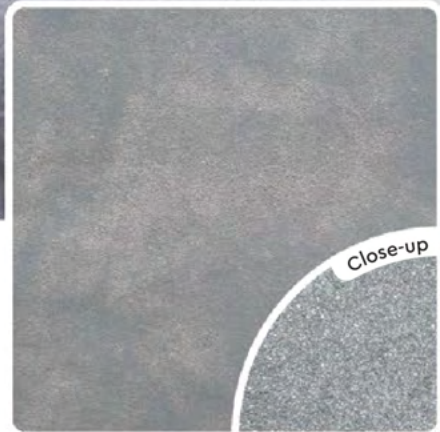


SCH-014

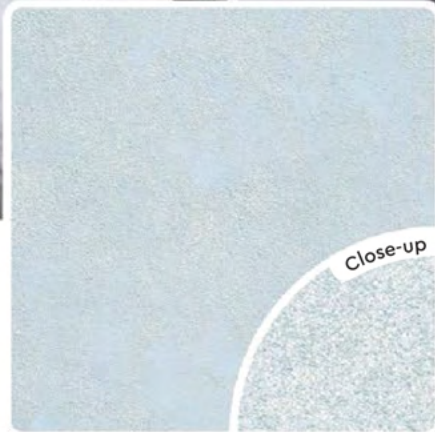
CORAL
BLUSH

SCH-019

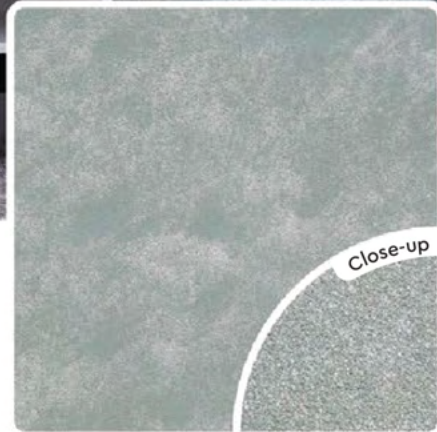
PEACOCK
BLUE



Stardust Silver | SCH-016



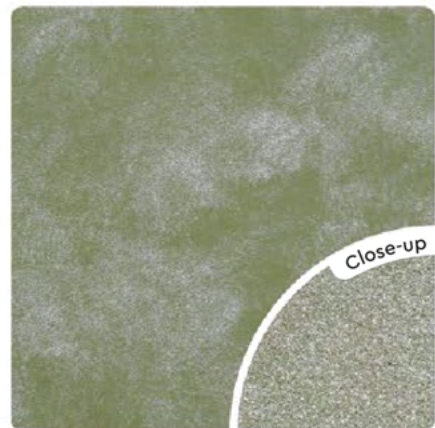
Lace Blue | SCH-017



Ash Grey | SCH-018



Peacock Blue | SCH-019



Olive Tree | SCH-020



Tropical Green | SCH-021

APPLICATION TECHNIQUE



APPLICATION VIDEO

Preparation: - Cover the edges of surface that won't be painted by masking it with tape, paper or plastic.
- Clean up the wall surface to ensure it is free from dirt and dust.



1 PRIMER

Roll 2 layers of primer on the entire surface. Allow 30 minutes to dry between the layers.
(The primer can be diluted with maximum 5% of clean water)

Tool: Roller



2 TEXTURE COAT

Brush on texture coat in criss cross patterns. Apply 1-2 layers. Ensure the whole surface area is covered.

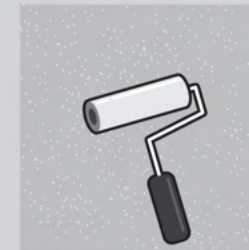
Tool: Brush



3 FLATTENING

Flatten the entire surface in circular motion to enhance the pattern.

Tool: Plastic Scrapper



4 TOPCOAT

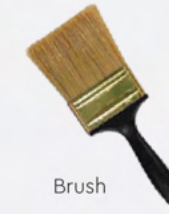
Evenly roll SR-Top 3 on entire surface. Allow to dry for 1 hour.

Tool: Roller

Tools:



Roller



Brush



Plastic Scrapper



PACKING DATA

1 L		Primer	Coverage (per set)	
1 L	Texture Coat		WALL	6 - 7 sqm
1 L	Topcoat (SR-Top 3)		CEILING	5 - 6 sqm

Strato® taffeta

A vibrant color layered in texture and dusted with a shimmering pearl effect crafts a bold and radiant feel onto the wall.



• INTERIOR ONLY

Features

Low VOC & Odor



Formaldehyde & Lead Free



Green Choice, Water Based & Eco-friendly



Easy, Quick Application & DIY Friendly

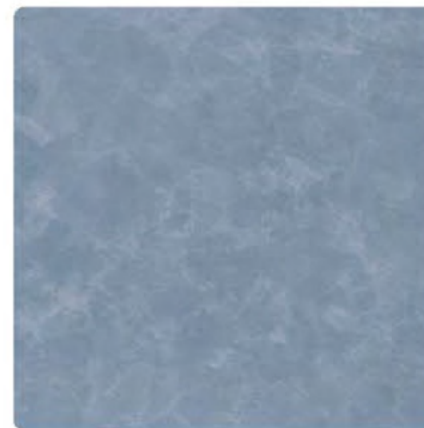


Easy Maintenance

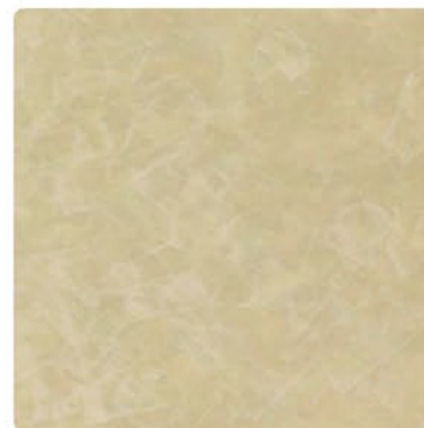


SRT-219

OYSTER
BEIGE



Light Sapphire | **SRT-214**



Oyster Beige | **SRT-219**



Blue Waves | **SRT-225**

SRT-201

PEWTER
GREY



SRT-214

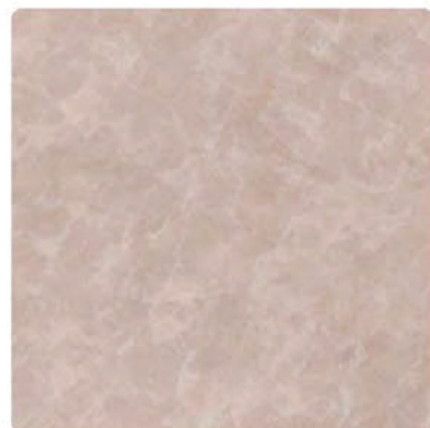
LIGHT
SAPPHIRE



Pewter Grey | **SRT-201**



Light Steel Blue | **SRT-203**



Light Sepia | **SRT-209**

SRT-232

PALE
LAVENDER



Malted Mocha | SRT-231



Pale Lavender | SRT-232



Ocean Surface | SRT-233

APPLICATION TECHNIQUE



APPLICATION VIDEO

Preparation: - Cover the edges of surface that won't be painted by masking it with tape, paper or plastic.
- Clean up the wall surface to ensure it is free from dirt and dust.



1 PRIMER

Roll 2 layers of primer on the entire surface. Allow 30 minutes to dry between the layers.
(The primer can be diluted with maximum 5% of clean water)

Tool: Roller



2 SANDING (OPTIONAL)

Sand the entire surface in circular motion to ensure the surface is smooth.

Tool: 600 Grit Sand Paper



3 TEXTURE COAT

Scrape texture coat in a random criss cross pattern. 2-3 layers. Every layer requires 30 minutes to dry.

Tool: Steel Scrapper



4 SANDING

Sand the entire surface in circular motion to enhance the pattern.

Tool: 600 Grit Sand Paper



5 TOPCOAT

Scrape on topcoat SR-Top 2 in a random criss cross overlapping patterns. Allow 1 hour to dry.

Tool: Steel Scrapper

Taffeta has a shimmering pearl effect topcoat. For a matte finishing, please request SR-Top 1.

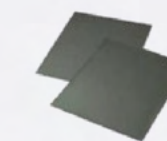
Tools:



Roller



Steel Scrapper



Sand Paper (600 Grit)

PACKING DATA

1 L	Primer
1 L	Texture Coat
0.5 L	Topcoat (SR-Top 2)

Coverage (per set)

WALL	4.5 sqm
CEILING	3.5 sqm



WALL FINISH PROFESSIONALS

Wallhub | The Exclusive (Sole) Distributor in Singapore



BRICK & STONE VENEER • TEXTURE PAINT • KASTPANEL • ECES • TEXTURE COATING • PEBBLE STONE COATING

www.wallhub.com.sg

  wallhubsg

Email: sales@wallhub.com.sg

Flagship Gallery
Boutique Showroom
HQ & Warehouse

| #01-08/09/31/32, Midview City, 18 Sin Ming Lane, S573960
| #01-38, Oxley Bizhub 2, 62 Ubi Road 1, S408734
| #01-10 (Level 1-3), Nordcom II, 2 Gambas Cres, S757044

wallhub